

MG6 33s
Vertical A&S
Place value.

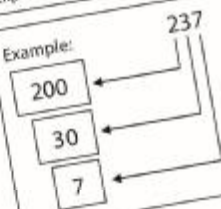
Name: _____
Date: _____

Identifying place value

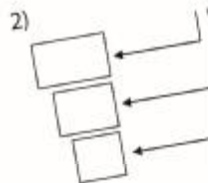
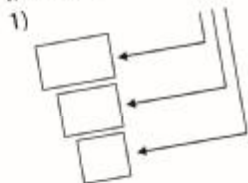
Hundreds	Tens	Ones
2	3	7

Standard form: 237
Word form: Two hundred thirty-seven
Expanded form: $200 + 30 + 7$

Example:



Write in expanded form.



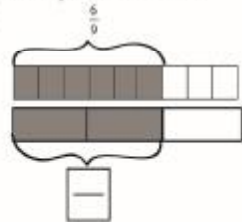
PreEminent™

© 2013 PreEminent Learning Centers, Inc.

MG9 81s
Multiplication & Division II
Fractions II
Find the equivalent fractions.

Name: _____
Date: _____

3)



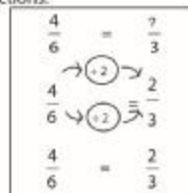
$\frac{6}{10} = \frac{\square}{\square}$

4)



$\frac{4}{12} = \frac{2}{6} = \frac{1}{3}$

Simplifying fractions:



1) $\frac{2}{12} = \frac{\square}{6}$

3) $\frac{2}{8} = \frac{\square}{4}$

2) $\frac{5}{10} = \frac{\square}{2}$

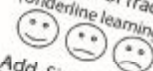
4) $\frac{2}{10} = \frac{\square}{5}$

PreEminent™

© 2013 PreEminent Learning Centers, Inc.

MG10 21p
Fractions I

Addition of fractions
(Underline learning focus)



Name: _____

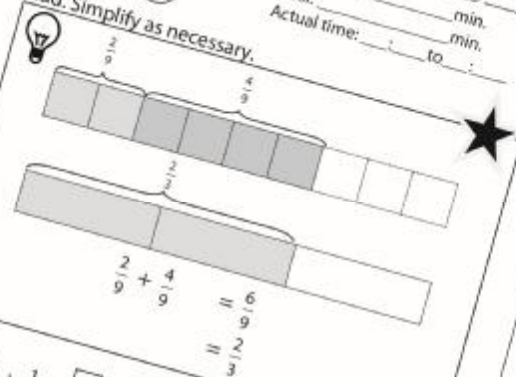
Date: _____

Target time: _____ min.

Goal: _____ min.

Actual time: _____ to _____

Add. Simplify as necessary.



$\frac{2}{9} + \frac{4}{9} = \frac{6}{9}$
 $= \frac{2}{3}$

$\frac{1}{4} = \frac{\square}{4} = \frac{\square}{2}$

$\frac{1}{8} = \frac{\square}{8}$

$\frac{1}{8} = \frac{\square}{8}$

$\frac{1}{8} = \frac{\square}{8}$

$\frac{1}{8} = \frac{\square}{8}$

$\frac{1}{8} = \frac{\square}{8}$

$\frac{1}{8} = \frac{\square}{8}$

© 2013 PreEminent Learning Centers, Inc.